



REPAVE ROOT RIVER PKWY IN 2022

Target Areas: Lincoln Ave to National
Ave in West Allis

Target Area for Re-paving

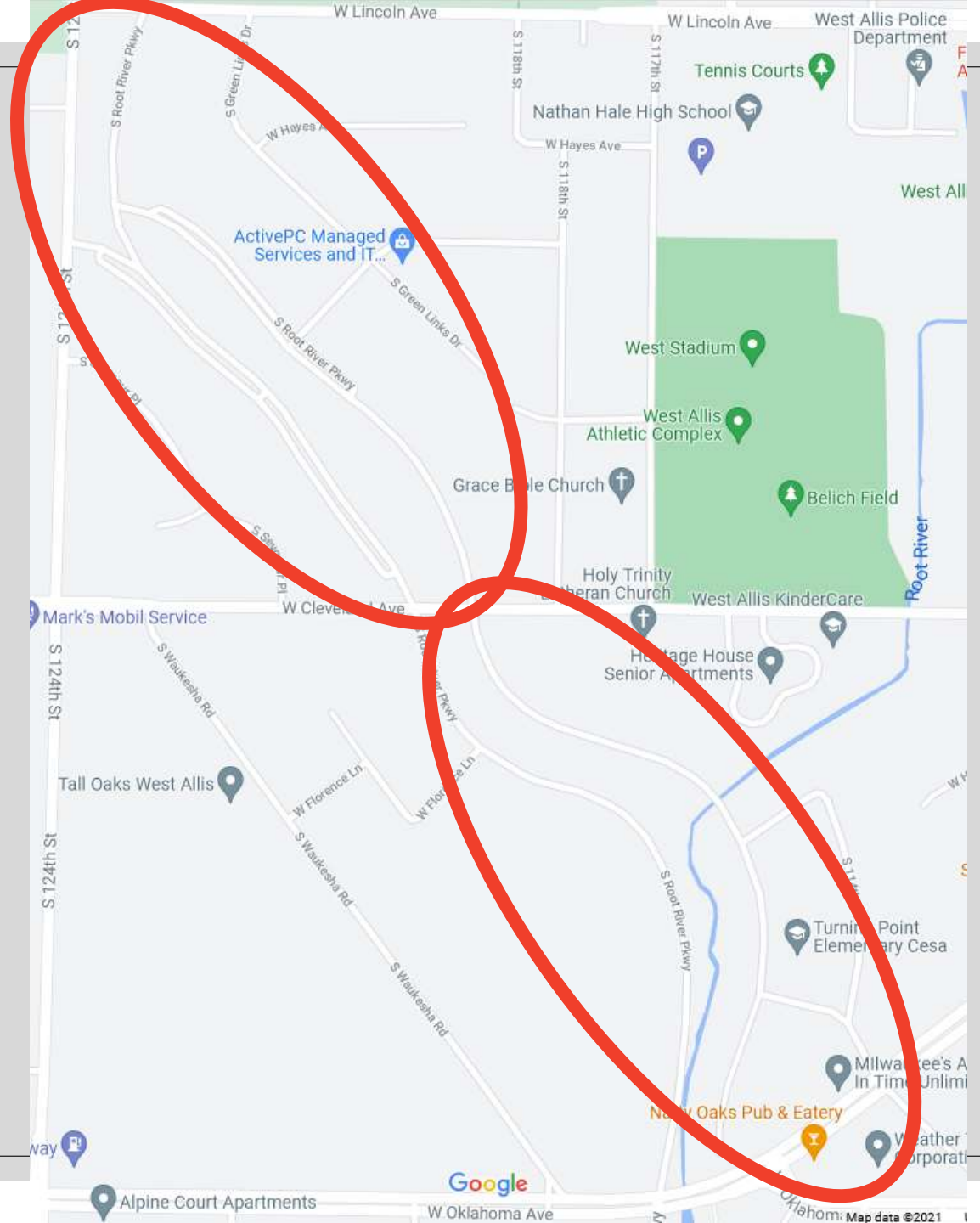
West Allis, just south of Greenfield Park

Highest Priority:

- Both sides from Lincoln Ave to Cleveland Avenue
- East side from Cleveland to National Avenue

Lower Priority:

- West side from Cleveland to National



Reasons

1. 25+ year old road, every dollar spent fixing is **WASTED taxpayer money**, need full repave!
2. **SAFETY**. Bikers, walkers, kids – they all veer into the middle of the road many places to avoid TERRIBLE road conditions. We want our kids safe!
3. **OAK LEAF**. This is on the oak leaf trail and it is dangerous with potholes, bad sections for bikes, and an embarrassment. We want a bike friendly road.
4. Car safety is also key. Cars also can veer around bad sections and hit the many damaged/pothole areas.
5. This is a community resource, not just for the residents on the street for many in the whole area.
6. **UNFIT**. The road is patently unfit for kids' scooters, big wheels, and other kid fun. And strollers battle to get through many sections (or veer into the road as noted above)! We want a walker and kid friendly road.

BIKERS VEER INTO ROADS TO AVOID HORRIBLE ROAD SECTIONS!

Just happened to bike by while I was taking pictures, proves the point





EVIDENCE

Pictures plus exact location number on Root River Parkway



2671



2621



2591



2557



2453



2453



2441



2380



2380



2400



2418



2436



2448



THESE ARE ALL AT DIFFERENT ADDRESSES

Proves the road is REALLY bad up and down the street!



2494



2484



2550



2580



2580 more!



2580 more





2596



2366



2366 more





2840



2840



2860



2880





2900





School





School more



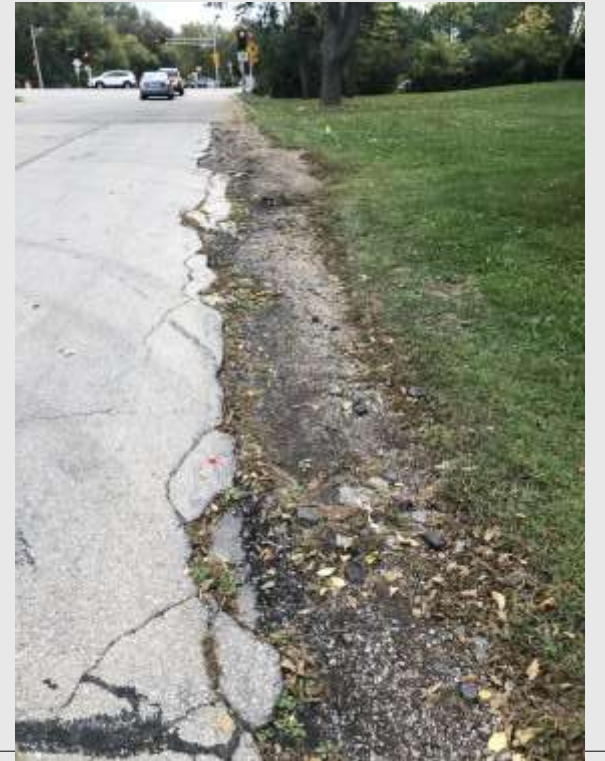
2982



3000



2947





HIGH PRIORITY AREA
LESS THAN 3 MILES OF
ROAD, REPAVE 2022!

Who to talk to?? Need to convince county board to allocate funds

Our County Board Member to contact

- <https://county.milwaukee.gov/EN/Board-of-Supervisors/Members/Anthony-Staskunas-17th-District>
- Anthony Staskunas
- (414) 278-4247
- anthony.staskunas@milwaukeecountywi.gov



2 Committees you can join VIRTUALLY to walk them through this file

- [County Parks Committee](#)
- [Finance Committee](#)
- [https://county.milwaukee.gov/EN/Board-of-Supervisors/Standing-Committees#Parks Energy and Environment](https://county.milwaukee.gov/EN/Board-of-Supervisors/Standing-Committees#Parks_Energy_and_Environment)